

# THE SCHOOL ADMINISTRATOR'S GUIDE TO VIRTUALIZATION

---

Tom Hollingsworth

Twitter: @networkingnerd

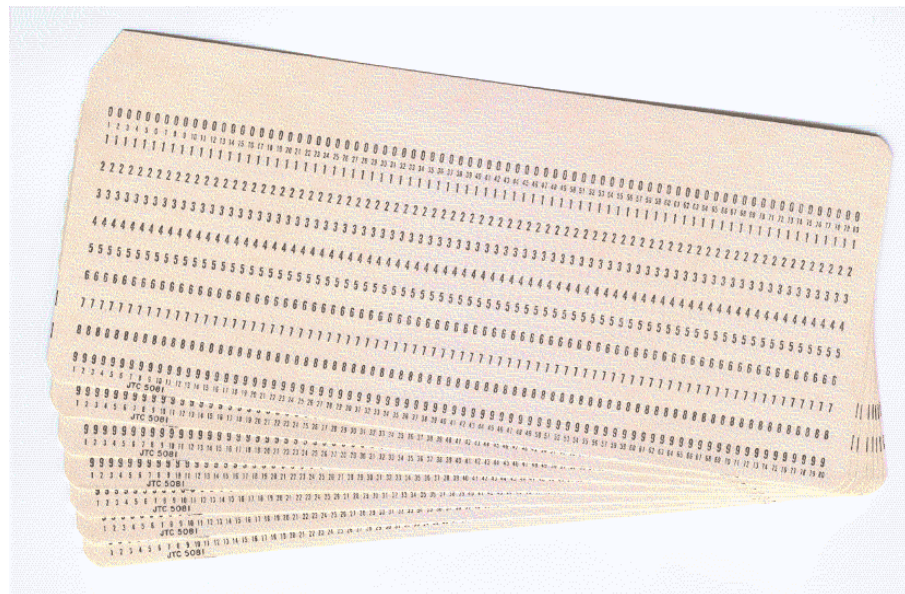
CCIE #29213

VMware vExpert 2012



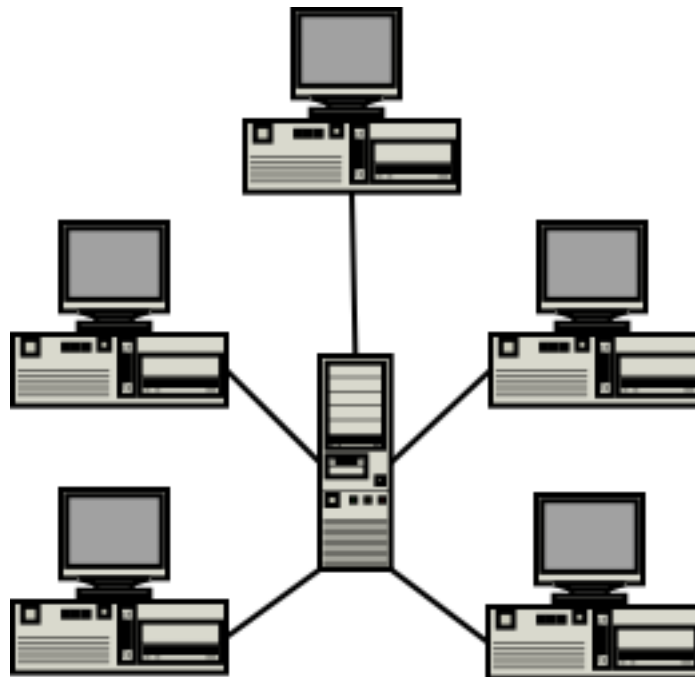
# In The Beginning...

- Mainframes
- Multiple users sharing vast computing resources
- Modern Mainframes have virtualization too!



# Client, Are You Being Served?

- Application Specific Servers
- Distributed Environment
- Server Sprawl



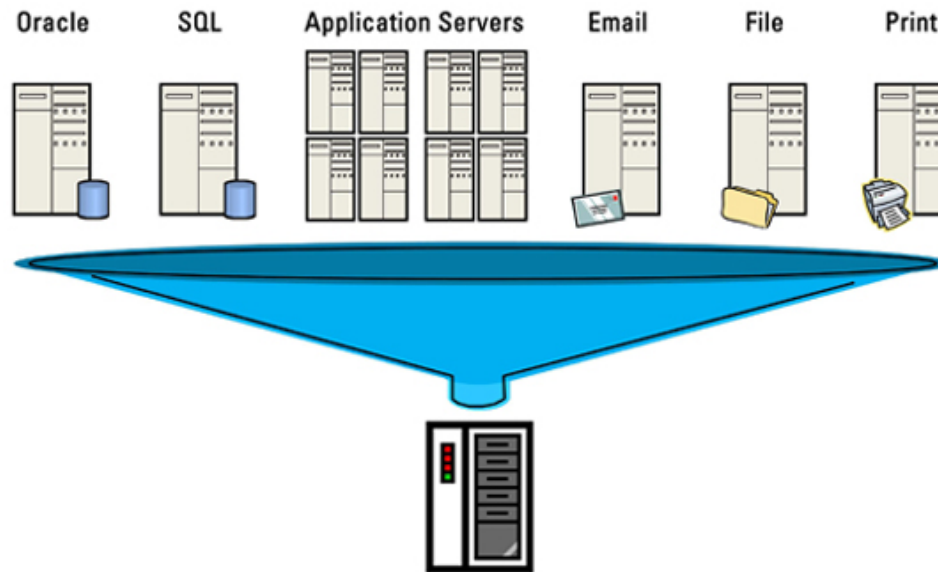
# More Power?

- Multi-core Processors (dual, quad, hexa, octo) plus Hyperthreading
- 768 GB of RAM in a single server
- 8 10-Gig Ethernet ports
- Average server utilization is around 2-3%

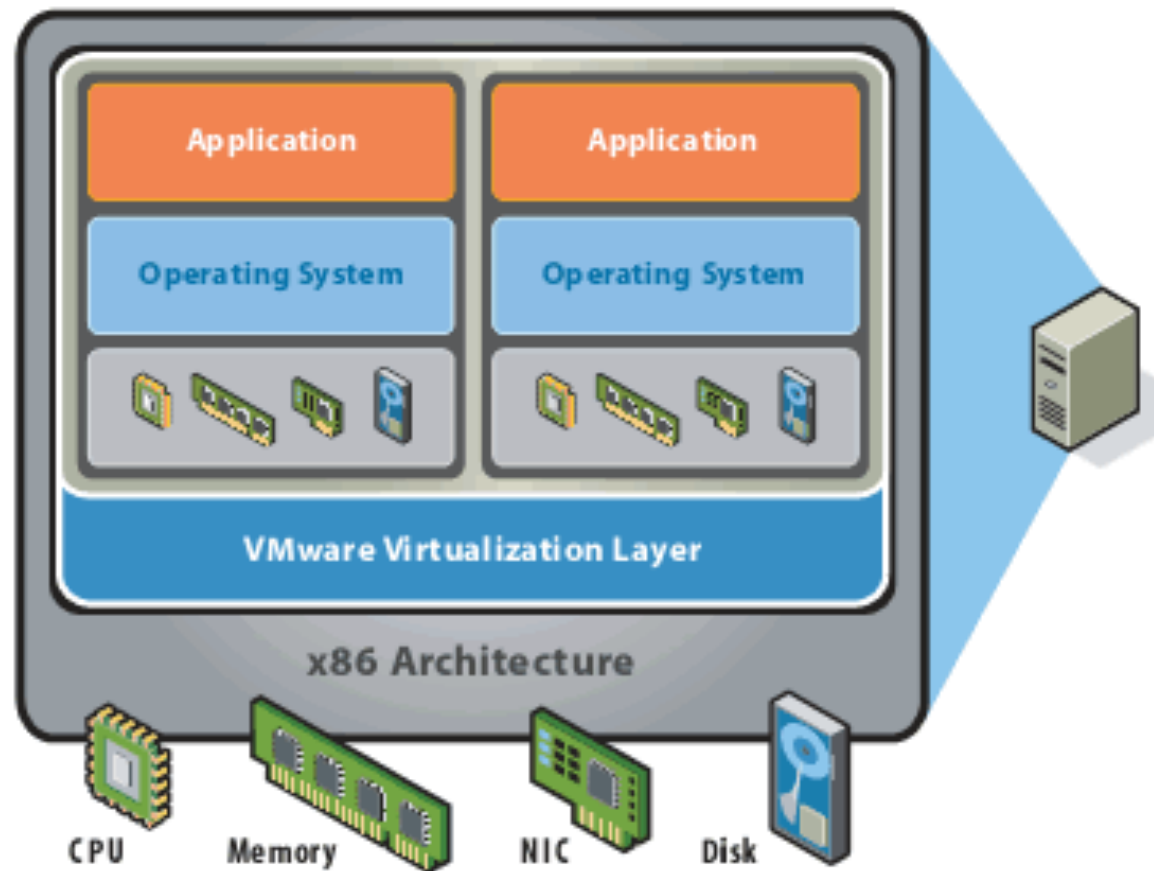


# Virtualize!

- x86 virtualization allows for large systems to be more efficiently allocated
- Hardware becomes a software interface, providing predictability and stability
- Resources can be shared, restricted, or guaranteed

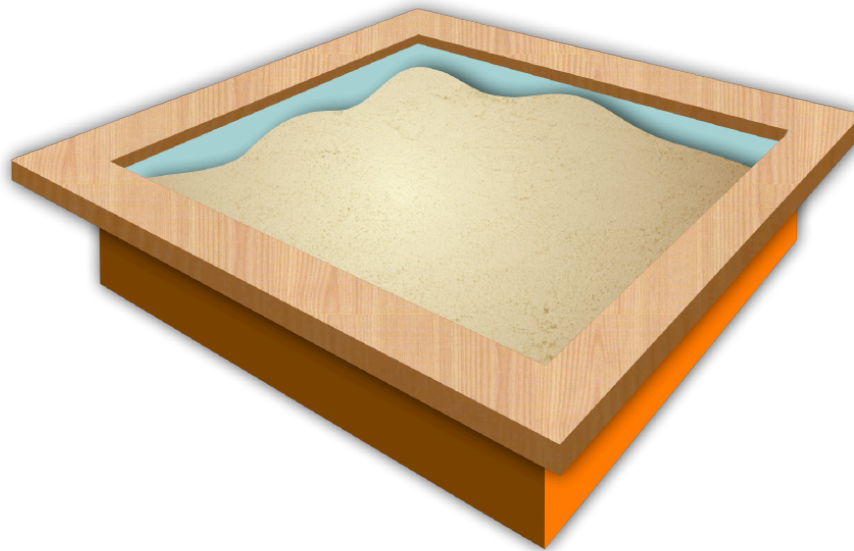


# Virtualization At A Glance



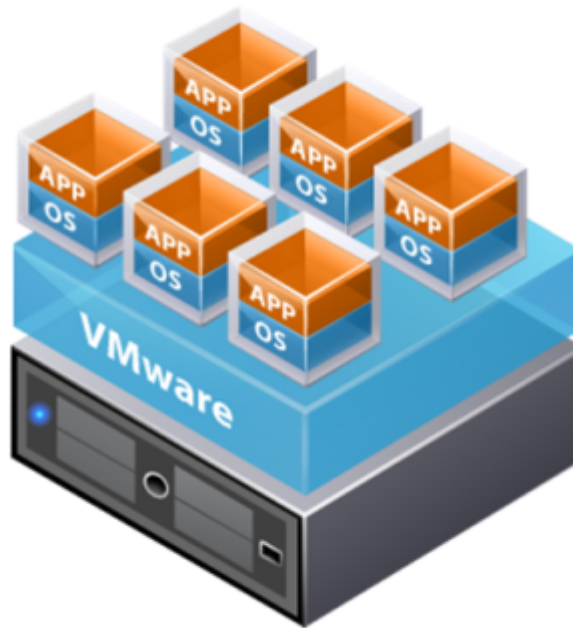
# Isolation

- Every Virtual Machine runs in its own memory space
- Guest security breaches do not impact the hypervisor
- Incompatible software updates don't impact multiple system applications (DLL Hell, Java Hell)



# Encapsulation

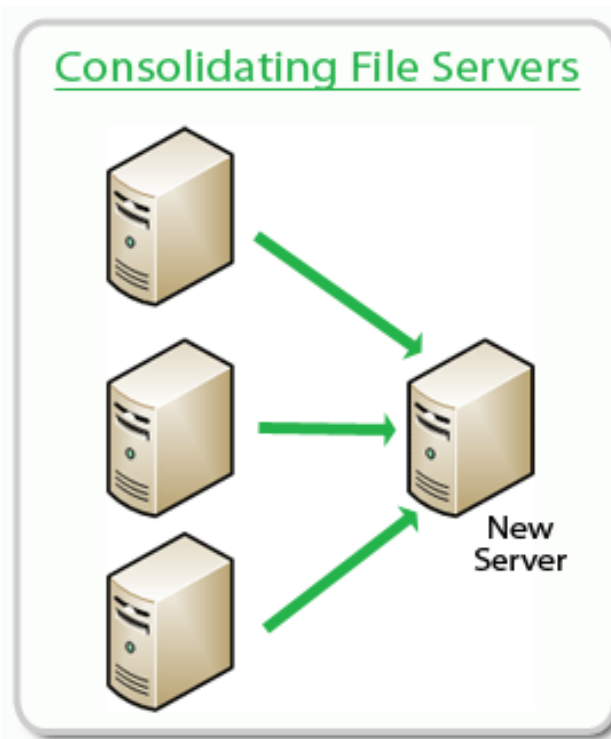
- All necessary hardware is packaged with the machine as software
- Portability
- Disaster Recovery and Backup





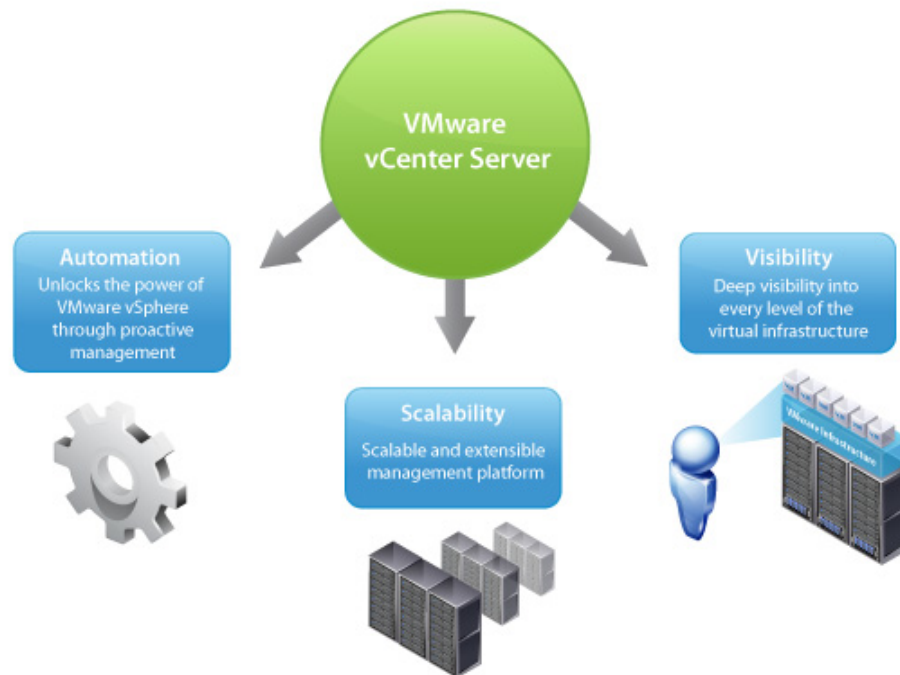
# Consolidation

- Consolidation Ratios typically run between 5-to-1 and 15-to-1
- Reduced power and cooling costs



# Management

- vCenter and System Center 2012
- Analytics and trending
- Single-pane-of-glass for an entire enterprise

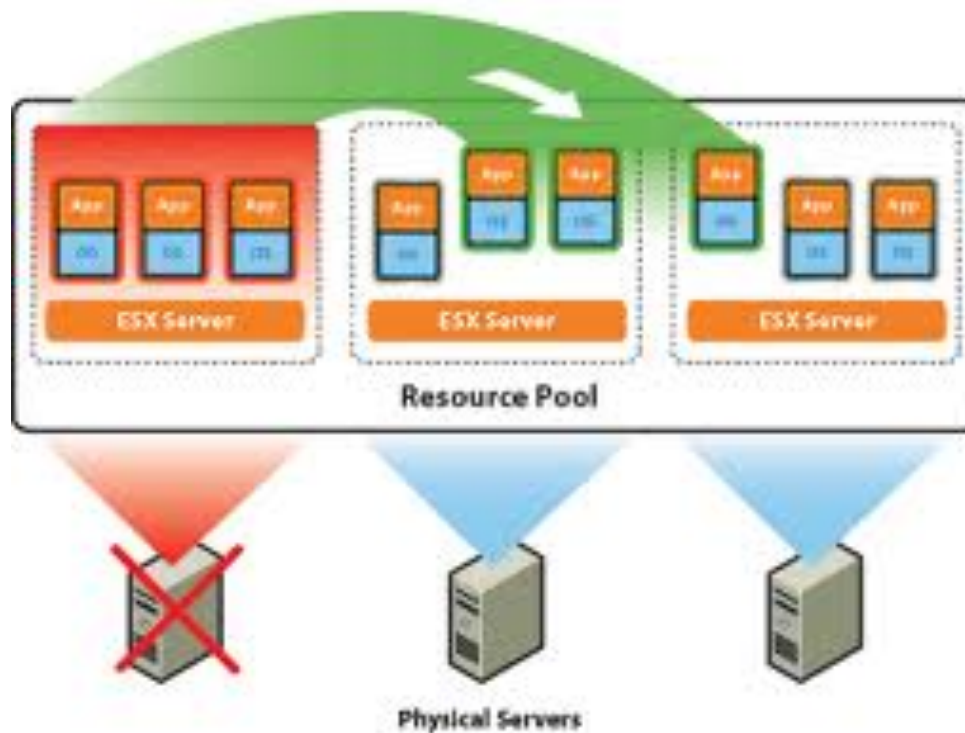


# Rapid Deployment

- Templates allow for easy deployment
- Spin up time for a typical server = ~10 minutes
- Ease of standardization

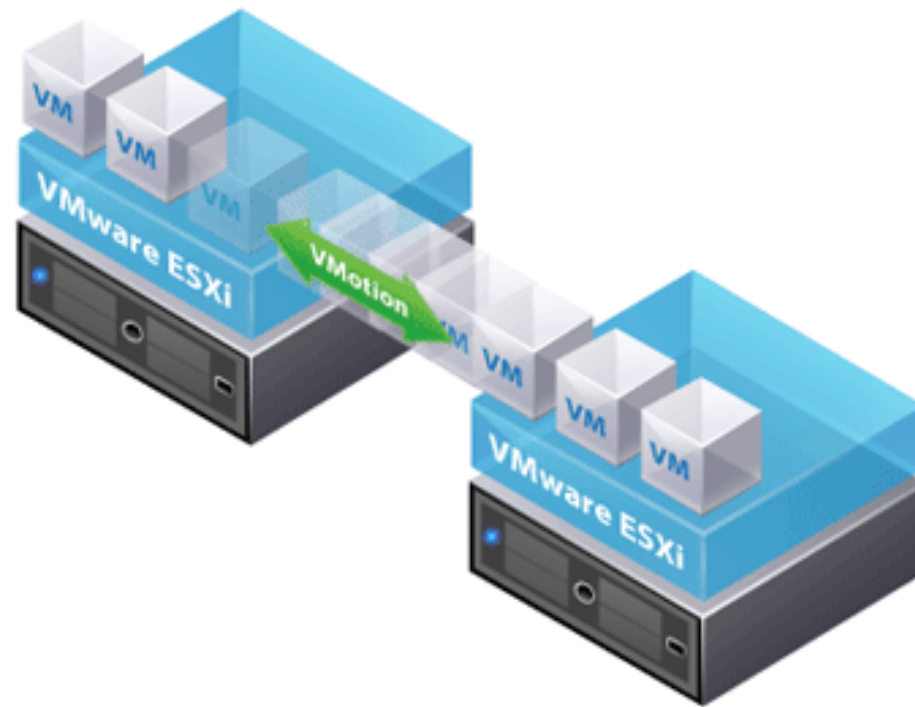
# High Availability

- Clustered hypervisors prevent single-server failures
- HA agent can restart failed VMs quickly
- Business Continuity Applications



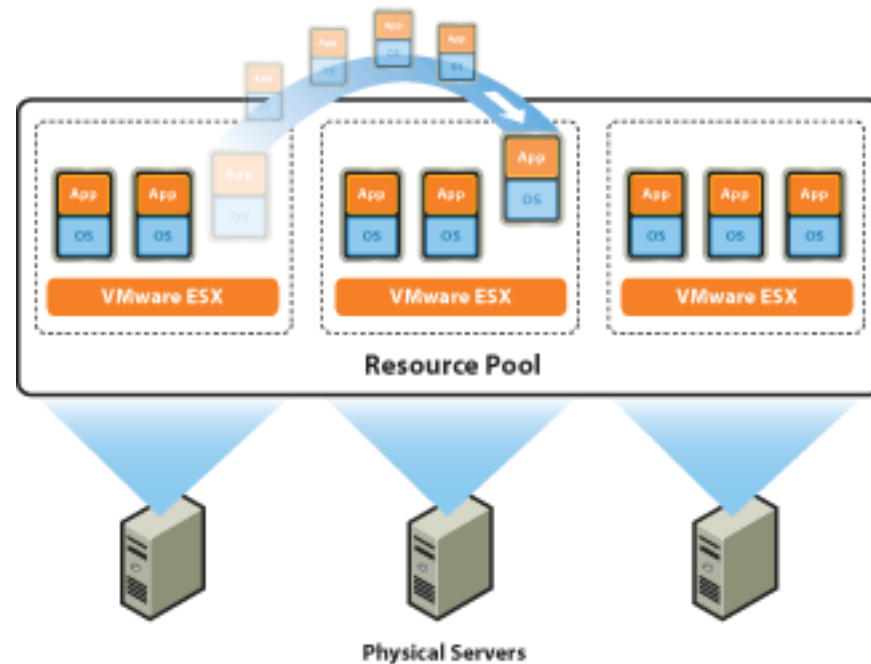
# Live Migration (vMotion)

- Migrate running VMs to another hypervisor without impact
- Machine state or storage
- Zero-downtime maintenance windows



# DRS

- Dynamic Resource Scheduler – Intelligent Live Migration
- Allows systems to receive peak performance
- Reroutes traffic away from resource-intensive applications
- Rebalances cluster after HA events.



# Try It Yourself

- Free Hypervisor – Note the limitations
  - <http://www.vmware.com/products/datacenter-virtualization/vsphere/overview.html>
- vSphere Essentials – vCenter + 3 Hypervisors
- Leverage experience

# Let's Continue The Discussion

Download presentation materials, share ideas, and discuss concepts shared in this session by joining our Edmodo Group:

## Admin Guide to Virtualization

Edmodo Group Code: **m3ba1n**

*See the handout provided  
at registration for instructions  
on how to access Edmodo*

